

Winsafe Corp. - Weld On Lifting Lug

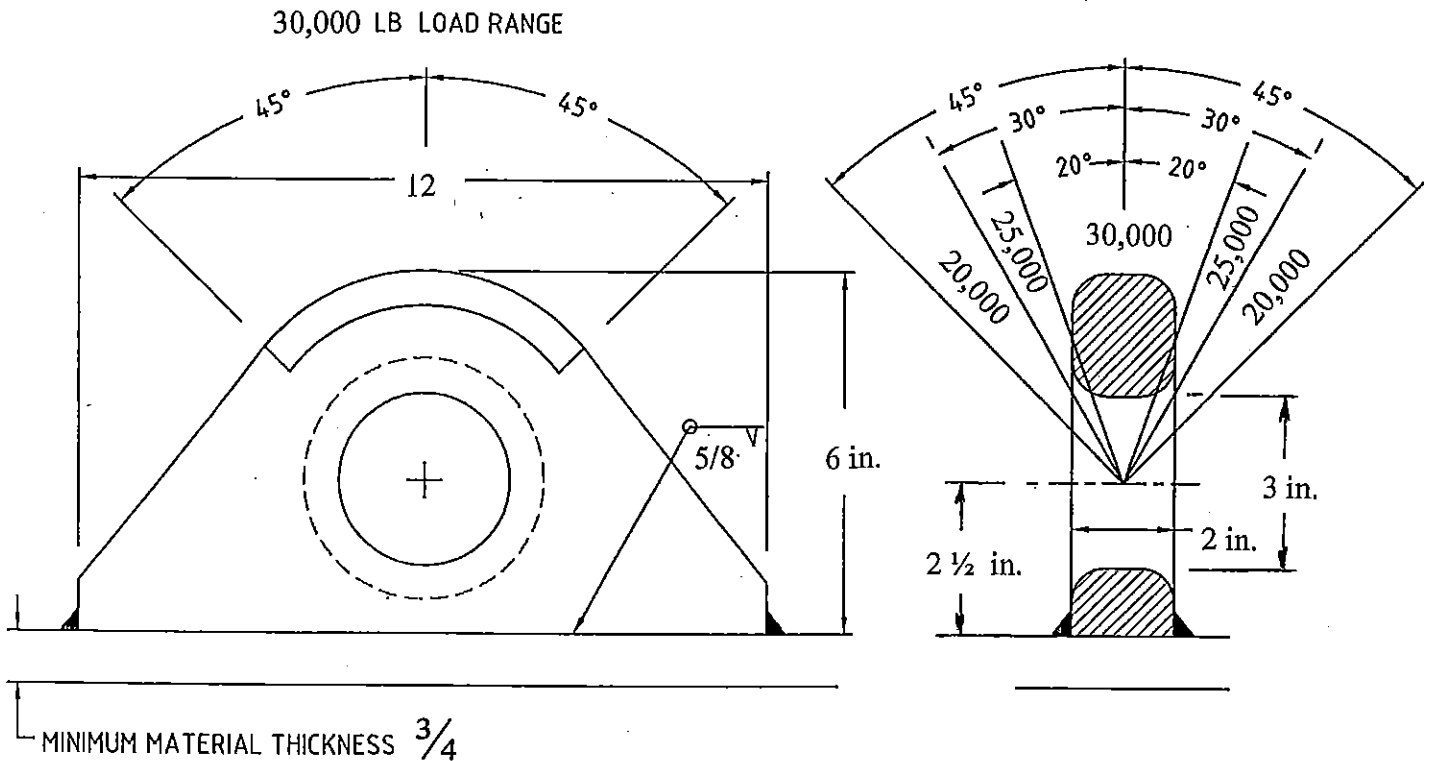
15 Ton Lug - Instructions for Use

Load Rating: The 15 Ton Lifting Lugs are rated to carry an applied load of up to 30,000 lbs. when the load is applied within the load range shown below. Allowable loading reduces to 25,000 lbs. if the load is applied at more than 20 degrees but less than 30 degrees offset to the side. When the load application is at more than 30 degrees but less than 45 degrees side offset the rating reduces to 20,000 lbs.

Do not apply loading at offset angles exceeding 45 degrees.

The strength and rigidity of the structure being lifted must also be adequate to withstand the applied loading. Localized reinforcement or gusseting may be required.

Identification: 15 Ton Lifting lugs are color coded red and have the rated capacity stamped into the metal.



Welding: The lifting lugs have been fabricated from A36 steel and are intended for welding to similar weldable steels. Welders must be qualified and shall follow appropriate procedures in accordance with American Welding Society codes and standards.

In order to develop the full load rating the material that the lug is being welded to must have a minimum thickness of 3/4 inch.

Weld surfaces shall be prepared by grinding or other appropriate means. All loose or thick scale, rust, moisture, grease, or other foreign material that would prevent proper welding shall be removed.

See other side of this sheet for additional instructions