

WINSAFE

ROOFTOP RIGGING & MATERIAL HANDLING SYSTEMS

HI-RIGGER

The WINSAFE Hi-Rigger drive system is an industry-first powered hoist that eliminates the need for workers to manually lower and raise heavy wire rope over the side of tall buildings when ground rigging a suspended stage.

- **SAFER:** No need for worker handling of wire rope at the roof edge. Tricky suspension point connections outboard of the wall face are also avoided.
- **FASTER:** Capable of raising and lowering up to 800 ft of wire rope at 100 ft per minute.
- Features lightweight modular aluminum components for ease of transportation, setup, and disassembly.
- Mounts tool-free onto Winsafe's modular outrigger beam system.
- Designed to be left in place during platform operation.
- Provides off-the-job storage solution for wire rope.
- Total system weight—64 lbs.



Patented

For more information, please contact:

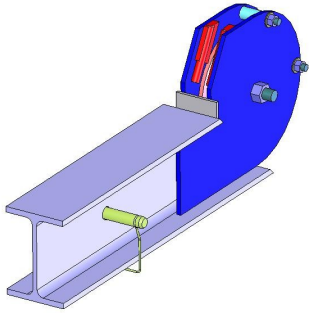
WINSAFE CORP.

One Valleywood Drive, Unit #1
Markham, ON
L3R 5L9 Canada

winsafe.com
905•474•9340
905•474•9341 fax
info@winsafe.com

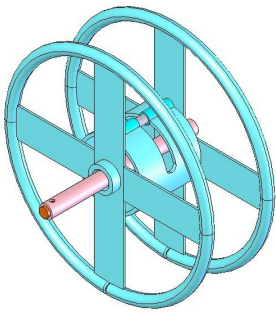
WINSAFE

HI-RIGGER COMPONENTS



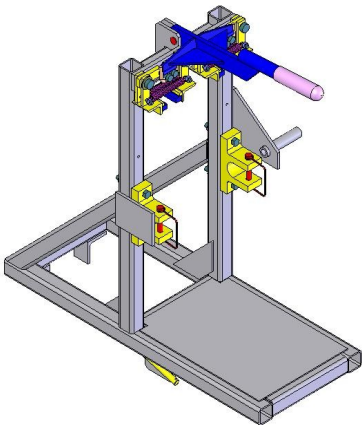
FRONT SHEAVE:

- A six inch diameter sheave is housed in an aluminum bracket that pins to a standard WINSAFE mid beam section, supporting the suspension rope.
- Weight—14 lbs.



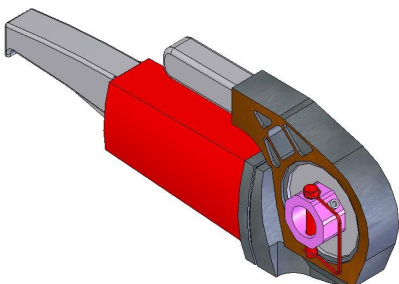
REEL:

- Holds up to 800 feet of 5/16" diameter wire rope.
- Outer rings act as secondary braking surface, as well as convenient carrying handles.
- Wire rope can be stored in place; can be rolled to ease handling.
- When the wire rope is fully extended, the connection to the drum comes into line with the drum shaft, removing any torque on the drive or brake system.
- Weight—12 lbs.



REEL FRAME:

- The aluminum support frame pins to a standard WINSAFE modular outrigger beam at the splice location.
- A manually released secondary brake system (acting on the outer rings of the reel) provides a backup to the portable drive unit.
- Designed to support the suspended wire rope with the reel remaining in place.
- Weight—25 lbs.



PORTABLE DRIVE:

- A portable motor and gear drive unit is used to provide the positive driving force required to lower or raise the wire rope.
- A single unit can be used to operate multiple cable drives.
- 1/2 HP, 120 V A/C motor.
- Weight—12.5 lbs.